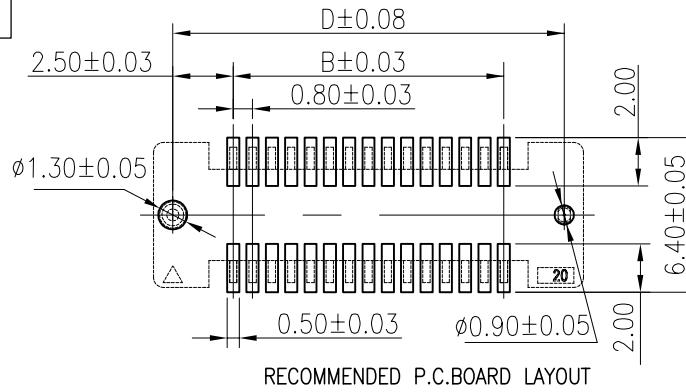
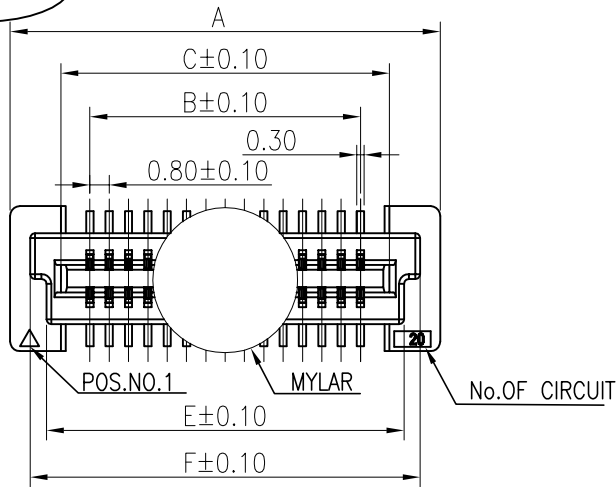


The product using material and processing must conform to the "WI-PZ-142"HSF technical standard control requirements

RoHS+HF



NOTE:

1.MATERIAL SPECIFICATION:

- 1-1.HOUSING: LCP UL94V-0,COLOR:BEIGE.
- 1-2.CONTACTS: PHOSPHOR BRONZE.

2.PLATING SPECIFICATION:

- 2-1.CONTACTS: 1 μ "GOLD FLASH OVERALL
50~100 μ "NICKEL UNDER PLATED.

3.MECHANICAL PERFORMANCE:

- 3-1.RETENTIVITY FORCE: 0.01Kgf/PIN MIN
- 3-2.DURABILITY: 50 CYCLES.

4.ELECTRICAL PERFORMANCE:

- 4-1.CURRENT RATING: 0.5A
- 4-2.VOLTAGE RATING: 100V
- 4-3.CONTACT RESISTANCE: 60m Ω Max.
- 4-4.INSULATION RESISTANCE: 500M Ω MIN
- 4-5.DIELECTRIC WITHSTANDING VOLTAGE: 500V

5.ENVIRONMENTAL PERFORMANCE:

- 5-1.OPERATING TEMPERATURE: -40°C~+125°C.
- 5-2.SALT FOG: 24H

6.P/N:

B0806 37 F 0-2 XX 2 X X X 01

SERIES NO: _____ TYPE:
1-SHELL
2-MYLAR

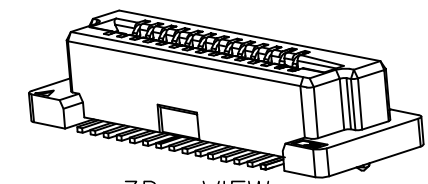
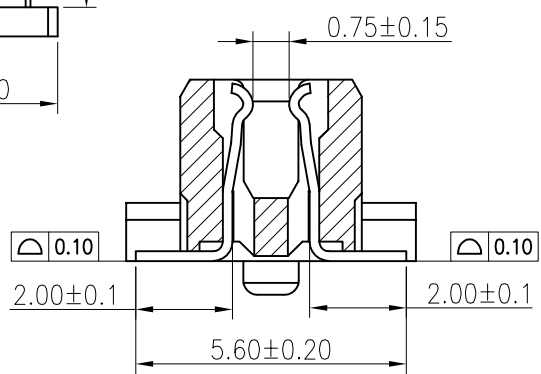
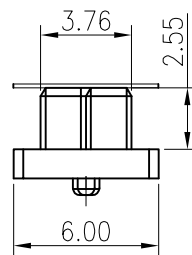
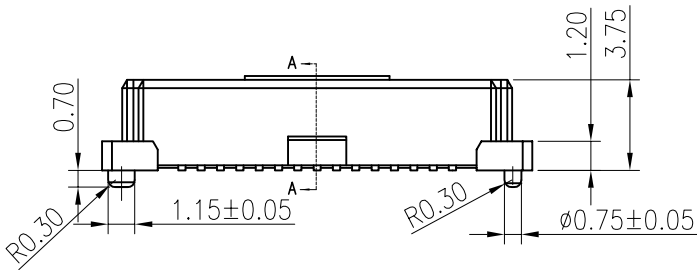
HEIGHT: _____ COLOR:
37: 3.7mm M-BEIGE
K-WHITE
S-NATURE

MALE FEMALE: _____ PLATING:
F-FEMALE A-ALL AU G/F
1-G/F
C-BRIGHE TIN

ANGLE: _____ TERMIPOINT:
0-180° 2-SMT

ROW NO: _____

PIN Q'PY: _____



3D VIEW

Circuit	Dimensions					
	A	B	C	D	E	F
20	13.80	7.20	9.60	12.20	10.80	12.15
30	17.80	11.20	13.60	16.20	14.80	16.15

REV.	REVISION RECORD	DATE	GENERAL TOLERANCES		SCALE:	NAME	DATE	PART.NO:	DWG.NO:
AO	NEW RELEASE	21.01.13	LINEAR	ANGLES	1:1	Wang_jr	21.01.13	B080637F0-2XX2XXX01	ENDE05
			0.0±0.35	X'REF±6°	APPROVED	Wang_jr	21.01.13		
			0.00±0.25	X'±3°	DESIGNER	Wang_jr	21.01.13		
			0.000±0.10	X'X' ±2°	DRAWN	Wang_jr	21.01.13	TITLE: 0.8mm PITCH BTB CONNECTOR RECEPTACLE ASSEMBLY 5.0H TYPE	



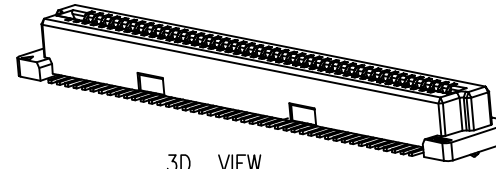
REV: A0 SHEET: 1/3

The product using material and processing must conform to the "WI-PZ-142"HSF technical standard control requirements

RoHS+HF

NOTE:

- 1.MATERIAL SPECIFICATION:
 - 1-1.HOUSING: LCP UL94V-0,COLOR:BEIGE.
 - 1-2.CONTACTS: PHOSPHOR BRONZE.
- 2.PLATING SPECIFICATION:
 - 2-1.CONTACTS: 1 μ" GOLD FLASH OVERALL
50~100 μ" NICKEL UNDER PLATED.
- 3.MECHANICAL PERFORMANCE:
 - 3-1.RETENTIVITY FORCE: 0.01KgF/PIN MIN
 - 3-2.DURABILITY: 50 CYCLES.
- 4.ELECTRICAL PERFORMANCE:
 - 4-1.CURRENT RATING: 0.5A
 - 4-2.VOLTAGE RATING: 100V
 - 4-3.CONTACT RESISTANCE: 60mΩ Max.
 - 4-4.INSULATION RESISTANCE: 500MΩ MIN
 - 4-5.DIELECTRIC WITHSTANDING VOLTAGE: 500V
- 5.ENVIRONMENTAL PERFORMANCE:
 - 5-1.OPERATING TEMPERATURE: -40°C~+125°C.
 - 5-2.SALT FOG: 24H
- 6.P/N:



3D VIEW

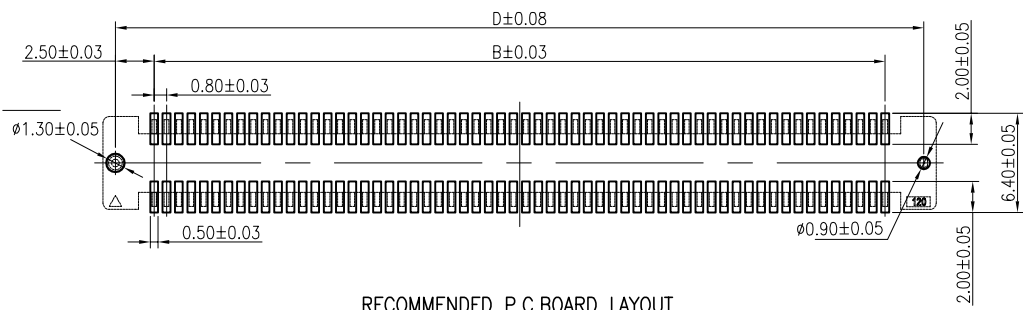
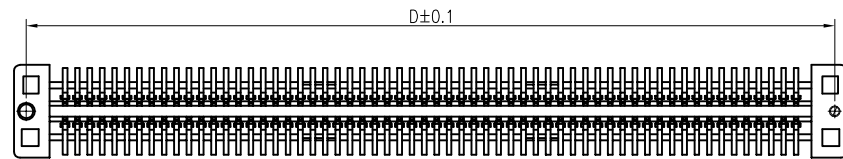
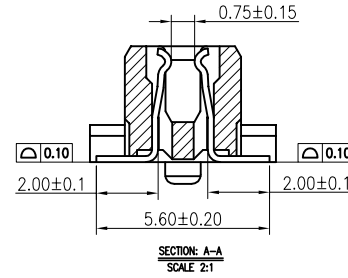
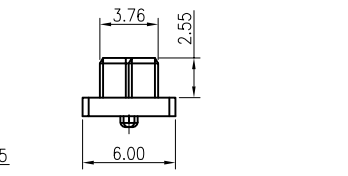
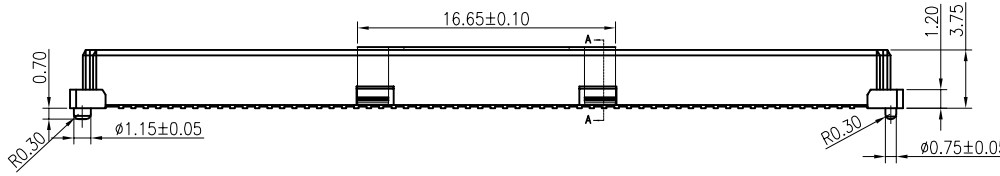
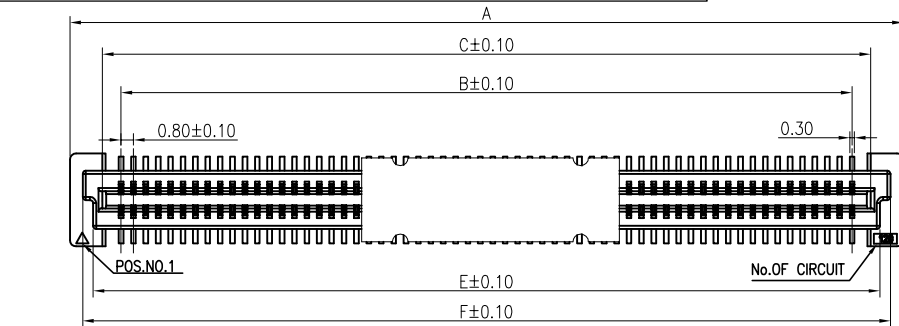
SERIES NO: B0806 37 F 0-2 XX 2 X X 01
 HEIGHT: 37: 3.7mm
 MALE FEMALE: F-FEMALE
 ANGLE: 0-180°
 ROW NO: 2-DOUBLE ROW
 PIN Q'PY: 20~200

TYPE:
 1-SHELL
 2-MYLAR

COLOR:
 M-BEIGE
 K-WHITE
 S-NATURE

PLATING:
 A-ALL AU G/F
 1-G/F
 C-BRIGHE TIN

TERMIPOINT:
 2-SMT



RECOMMENDED P.C.BOARD LAYOUT

Circuit	Dimensions					
	A	B	C	D	E	F
40	21.80	15.20	17.60	20.20	18.80	20.15
50	25.80	19.20	21.60	24.20	22.80	24.15
60	29.80	23.20	25.60	28.20	26.80	28.15
80	37.80	31.20	33.60	36.20	34.80	36.15
100	45.80	39.20	41.60	44.20	42.80	44.15
120	53.80	47.20	49.60	52.20	50.80	52.15
140	61.80	55.20	57.60	60.20	58.80	60.15
160	69.80	63.20	65.60	68.20	66.80	68.15
180	77.80	71.20	73.60	76.20	74.80	76.15
200	85.80	79.20	81.60	84.20	82.80	84.15

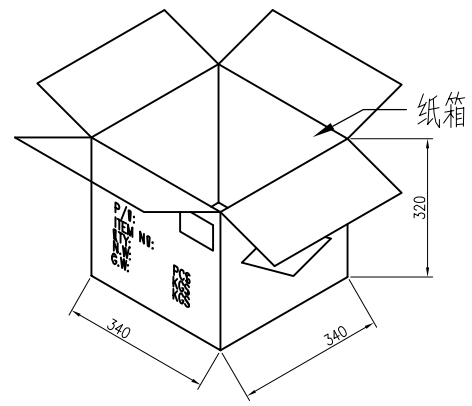
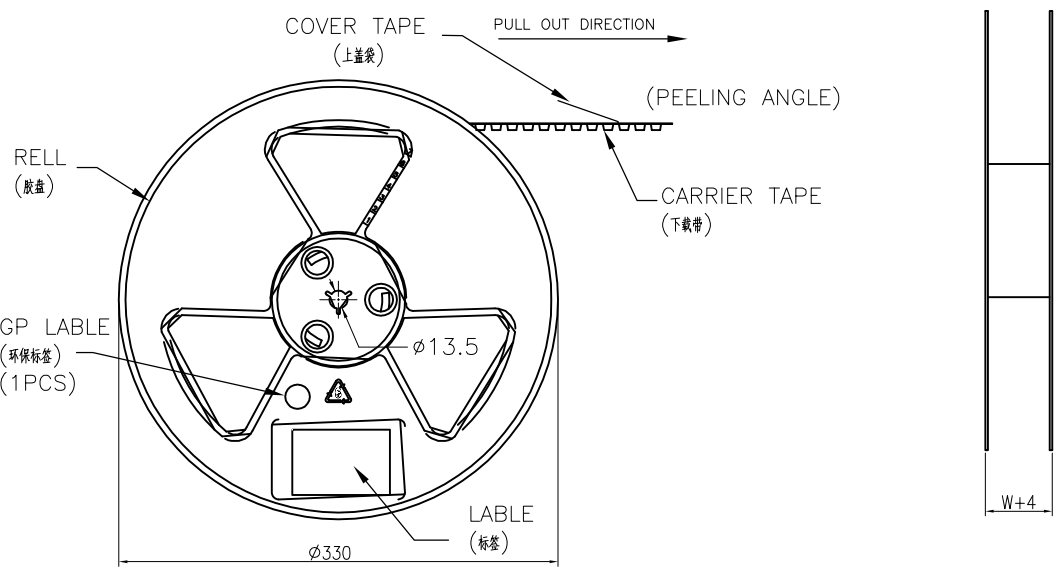
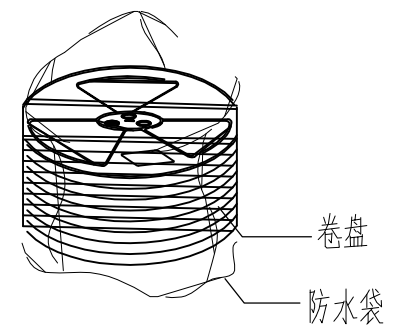
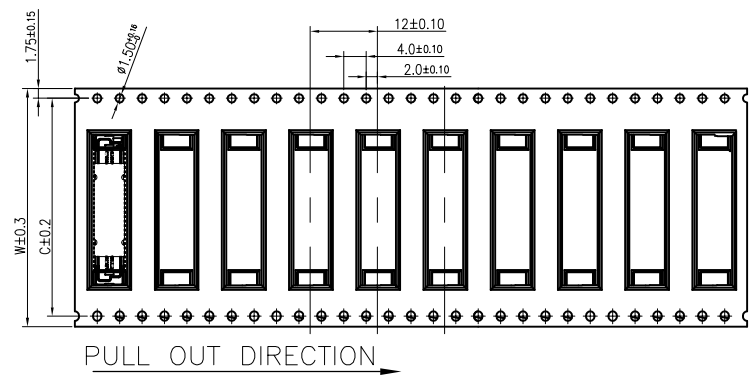
REV.	REVISION RECORD	DATE		GENERAL TOLERANCES		SCALE: 1:1	NAME	DATE	PART.NO: B080637F0-2XX2XXX01	DWG.NO: ENDE05	
AO	NEW RELEASE	21.01.13		LINEAR	ANGLES	APPROVED	Wang_jr	21.01.13			
			0.0±0.35	X'REF±6°	DESIGNER	Wang_jr	21.01.13	TITLE: 0.8mm PITCH BTB CONNECTOR RECEPTACLE ASSEMBLY 5.0H TYPE			
			0.00±0.25	X'±3°	DRAWN	Wang_jr	21.01.13				
			UNIT:mm	X'X' ±2°					REV: A0	SHEET: 2/3	
			SIZE: A4	0.000±0.10							

The product using material and processing must conform to the "WI-PZ-142"HSF technical standard control requirements

RoHS+HF

NOTE:
 1.10 SProcket hole pitch cumulative tolerance ± 0.20
 2.Carrier camber is within 1mm in 100mm.
 3.Material:black conductive polystyrene alloy.
 4.Material Thickness: 0.3 ± 0.05 mm.
 5.For tape width(dim W)44 and 72mm pilot holes are provided on one sides.

Tape width 44 and 72 mm



Circuit	W	C	PCS /REEL	REEL/CARTON	SUM(PCS)
40~60PIN	44	40.4	1000	6	6000
70~80PIN	56	52.4	1000	5	5000
100~120PIN	72	68.4	1000	4	4000

REV.	REVISION RECORD	DATE	GENERAL TOLERANCES		SCALE:	NAME	DATE	PART.NO:	DWG.NO:	 WanLian Teconology Co., Ltd	
A0	NEW RELEASE	21.01.13	LINEAR	ANGLES	1:1	Wang_jr	21.01.13	B080637F0-2XX2XXX01	ENDE05		
			0.0 \pm 0.35	X'REF \pm 6'	APPROVED	Wang_jr	21.01.13	TITLE: package drawing			
			0.00 \pm 0.25	X' \pm 3'	DESIGNER	Wang_jr	21.01.13				
			UNIT:mm	X'X' \pm 2'	DRAWN	Wang_jr	21.01.13			REV: A0	SHEET: 3/3
			SIZE: A4	0.000 \pm 0.10							